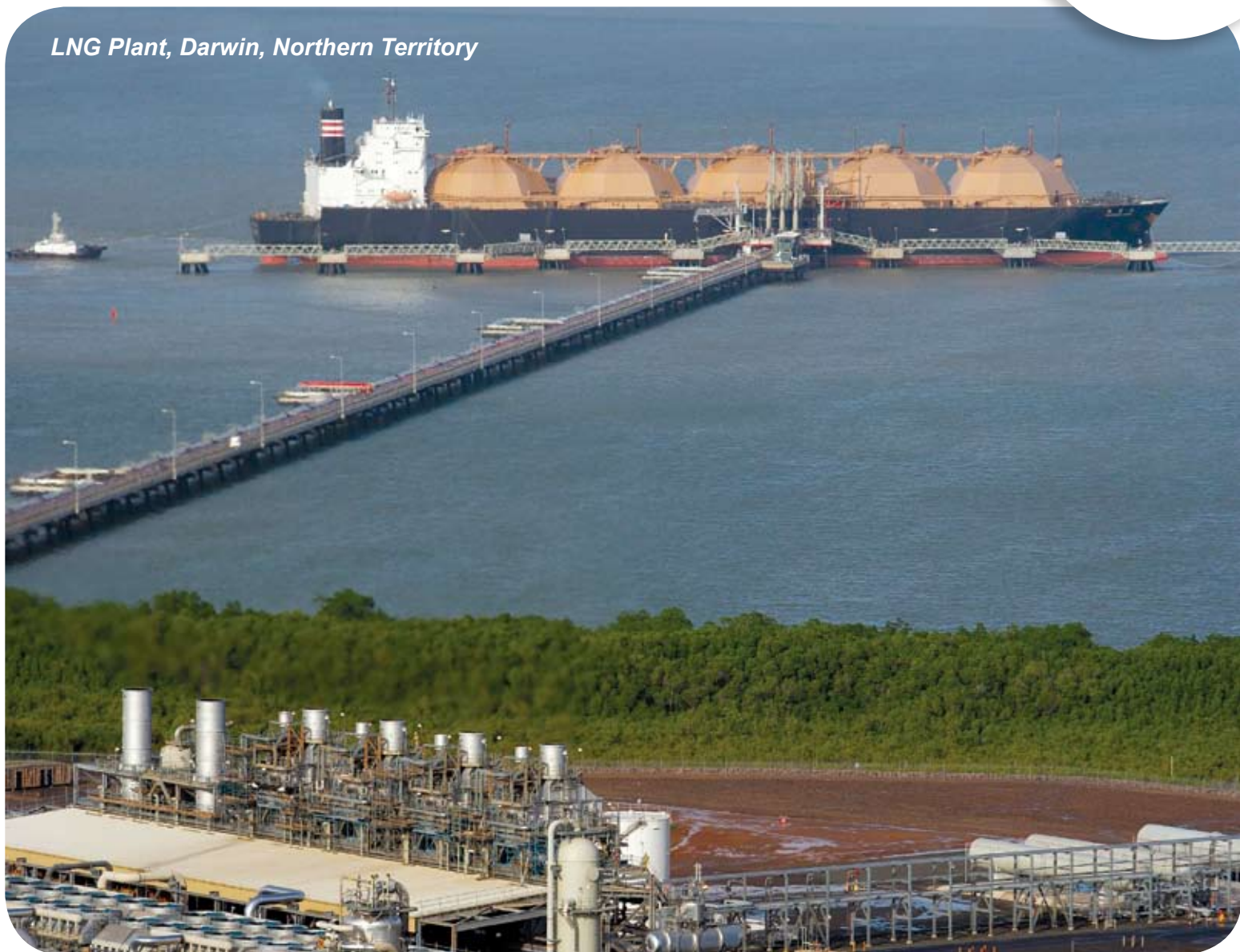


LNG Plant Development



LNG Plant, Darwin, Northern Territory



Australia Pacific LNG (APLNG) is considering constructing its LNG plant within the Curtis Island Industry Precinct in the Gladstone State Development Area.

The plant will be developed in stages with an ultimate production capacity of 16 million tonnes per annum (Mtpa) of LNG.

A front end engineering design (FEED) process is being undertaken to finalise the configuration of the plant.

The LNG plant will use ConocoPhillips Optimized Cascade® technology. This is a proven and reliable technology well-suited to a CSG application.

It is the same technology used in the Darwin LNG plant, which was developed by ConocoPhillips in 2006.



ConocoPhillips

APLNG is a CSG to LNG Joint Venture between Origin and ConocoPhillips